

**REI
DESIGN
COLLABORATIVE**



OFFICE DIRECTIONS + PARKING GUIDELINES

RDC-S111, INC. | 245 EAST THIRD STREET, LONG BEACH CA 90802

If you have any questions please call our offices at 562.628.8000 and one of our staff members will assist you. Thank you!

A. DRIVING DIRECTIONS FROM 405 SOUTH FREEWAY

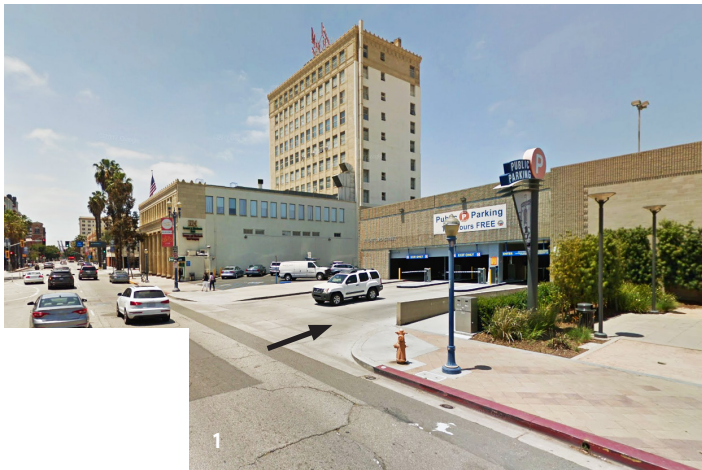
- Exit to I-710 Fwy South
- Exit 1C to Downtown Long Beach/ Convention Center/ Aquarium
- Exit onto Sixth Street
- Right onto Long Beach Boulevard.
- Right onto Third Street
- Office is at: 245 East Third Street

1. PARKING FROM THIRD STREET

- Parking is at: 51 East Third Street, Long Beach CA 90802
- Heading west on Third Street, the parking structure will be on your right after North Waite Center and Harvey Milk Park
- First 2 hours of parking are free
- Exit the parking structure onto the Promenade
- Enter RDC-S111, Inc.'s office on the Third Street entrance

2. PARKING FROM FOURTH STREET

- Parking is at: 51 East Third Street, Long Beach CA 90802
- Heading east on Fourth Street, the parking structure will be on your right after Pine Avenue and before the Wingstop.
- First 2 hours of parking are free
- Exit the parking structure onto the Promenade
- Enter RDC-S111, Inc.'s office on the Third Street entrance



PARKING STRUCTURE TO OFFICE DIRECTIONS

RDC-S111, INC. | 245 EAST THIRD STREET, LONG BEACH CA 90802



If you have any questions please call our offices at 562.628.8000 and one of our staff members will assist you. Thank you!

* Main office entrance opens at 8:00AM and closes at 5:30PM, Monday - Friday. If you are planning to visit Retail Design Collaborative or Studio One Eleven during non-business hours please coordinate with your company contact directly.

Keynotes

- 1 Parking entrance from East Third Street, between Pine Avenue and Long Beach Boulevard.
- 2 Parking entrance from East Fourth Street, between Pine Avenue and Long Beach Boulevard.
- 3 Main office entrance is located on East Third Street
- 4 Exit the Metro Blue line at the Fifth Street Station